

## Reduce your heating bills

Save money by:

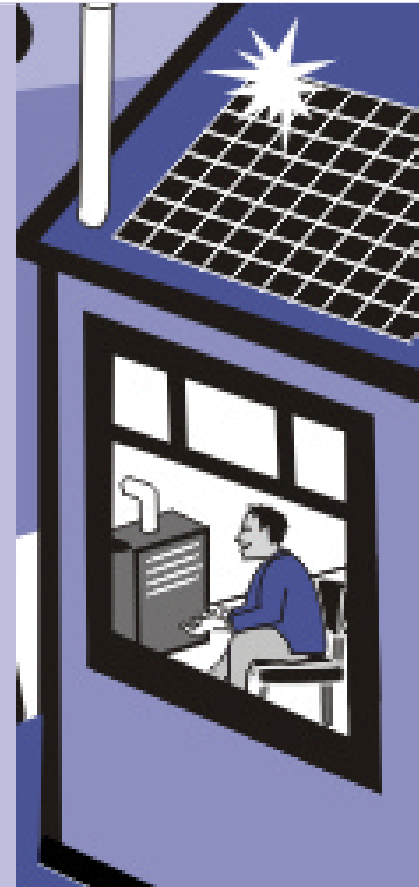
- insulating ceilings, walls and floors
- sealing out draughts
- covering your windows with curtains, blinds or double glazing, and placing a pelmet above curtains
- installing doorways or other barriers between different areas of your home
- opening curtains on north-facing windows on sunny winter days
- using ceiling fans to return heat that has risen to a second storey or to the ceiling
- wearing warm clothing
- closing off chimneys when they are not being used, to stop heat losses through the chimney cavity.

## Cleaner heating

Solar power, green power (electricity produced from renewable energy sources) and gas are clean alternatives to wood heating.

Contact the Sustainable Energy Development Authority for more information. Visit [www.greenpower.com.au](http://www.greenpower.com.au) or the Energy Smart website ([www.energysmart.com.au/les](http://www.energysmart.com.au/les)) where you can click on 'Homes' then 'Choose a heating system'. Alternatively, phone 1300 138 638.

EPA 2003/38  
April 2003  
Printed on recycled paper



**Stay warm,  
breathe easy**

**Information for  
owners of wood  
heaters**



# Help clear the air

Smoke from wood heaters contributes to air pollution. You can minimise pollution by:

- always burning small logs of aged, dry hardwood—unseasoned wood has more moisture which makes a heater smoke
- storing wood under cover in a dry ventilated area; freshly cut wood needs to be stored for 8–12 months
- never burning rubbish, driftwood or treated or painted wood, which pollute the air and can be poisonous
- using plenty of dry kindling to establish a good fire quickly, when lighting a cold heater
- stacking wood loosely in your firebox so air can circulate—don't cram the firebox full
- keeping the flame lively and bright; your fire should only smoke for a few minutes when you first light it and when you add extra fuel. Open the air controls fully for 5 minutes before and 15–20 minutes after reloading
- not letting your heater smoulder overnight—keep enough air in the fire to maintain a flame
- checking your chimney regularly— if there is smoke coming from the chimney, increase the air supply to your fire
- cleaning the chimney every year, to prevent creosote build-up.

**If you are buying a new heater, consider alternatives to wood. If buying a new wood heater, check the compliance plate on the back to make sure it meets the current Australian Standard (AS/NZS4013:1999).**

reduce  
smoke

improve  
local air  
quality

care for  
your health

save money

